

FTSE ST Index Series

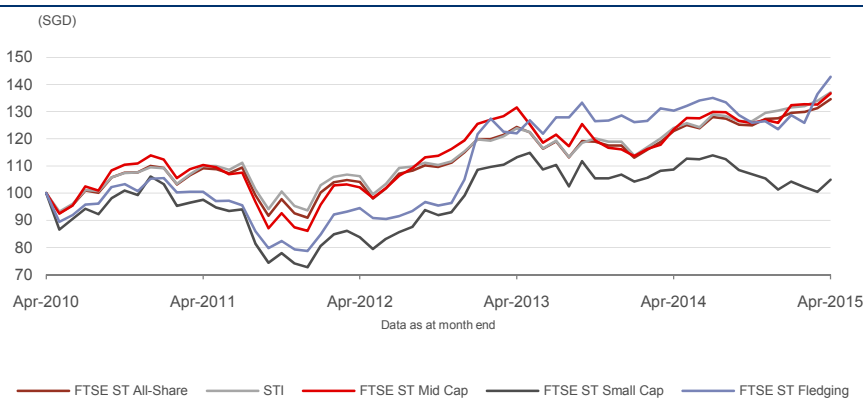
Data as at: 30 April 2015

FTSE Group, Singapore Exchange (SGX) and Singapore Press Holdings (SPH) have jointly created the FTSE ST Index Series to provide investors with a comprehensive series of indices for accessing segments the Singapore market, including size, sectors, and China indices.

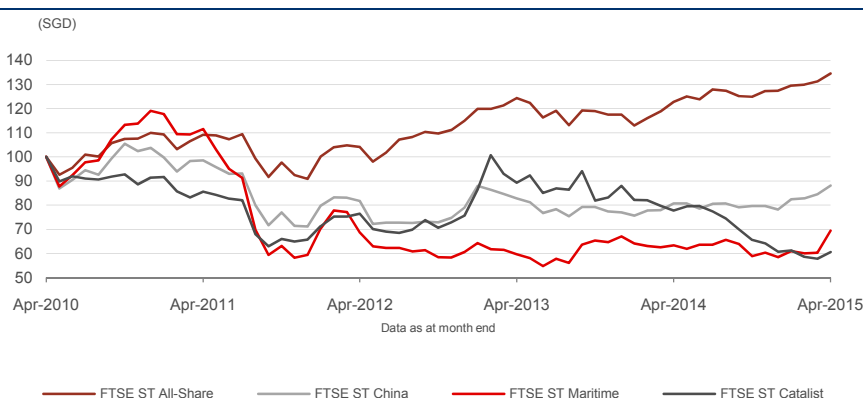
The Straits Times Index (STI) is the flagship index, capturing the most liquid companies on the Singapore market.

Please see the relevant factsheet for information about the other major indices in the series.

5-Year Performance - Total Return



5-Year Performance - Total Return



FEATURES

Coverage

All eligible stocks listed on SGX Main Board and SGX Catalist.

Objective

The indices are designed for the creation of index tracking funds, derivatives and as a performance benchmark.

Investability

Stocks are selected and weighted to ensure that the index is investable.

Liquidity

Stocks are screened to ensure that the indices are tradable (with the exception of FTSE ST Fledgling Index and FTSE ST Catalist Index to which no liquidity screen is applied).

Transparency

The indices use a transparent, rules-based construction process. Index Rules are freely available on the FTSE website.

Availability

The indices are calculated based on price and total return methodologies, both real time and end-of-day.

Industry Classification Benchmark

Index constituents are categorized in accordance with the Industry Classification Benchmark (ICB), the global standard for industry sector analysis.

Performance and Volatility - Total Return

Index (SGD)	Return %						Return pa %*		Volatility %**		
	3M	6M	YTD	12M	3YR	5YR	3YR	5YR	1YR	3YR	5YR
FTSE ST All-Share	3.8	7.7	5.5	9.6	29.3	34.5	8.9	6.1	7.5	9.9	12.7
STI	4.2	8.3	5.1	10.5	29.0	37.0	8.9	6.5	8.3	10.4	12.4
FTSE ST Mid Cap	3.3	8.7	8.6	10.7	33.9	36.7	10.2	6.5	6.4	10.7	14.5
FTSE ST Small Cap	0.7	-1.9	3.6	-3.5	25.3	4.9	7.8	1.0	7.8	11.9	17.2
FTSE ST Fledging	10.9	13.5	15.6	9.6	51.1	42.8	14.8	7.4	9.5	11.6	15.5
FTSE ST China	7.0	10.7	12.7	9.3	7.9	-11.8	2.6	-2.5	9.6	12.6	17.6
FTSE ST Maritime	14.0	18.1	18.9	9.7	1.2	-30.5	0.4	-7.0	15.5	18.3	24.5
FTSE ST Catalist	-1.1	-7.5	-0.1	-22.1	-20.6	-39.4	-7.4	-9.5	13.5	18.8	20.2

* Compound annual returns measured over 3 and 5 years respectively

** Volatility – 1YR based on 12 months daily data. 3YR based on weekly data (Wednesday to Wednesday). 5YR based on monthly data

Year-on-Year Performance - Total Return

Index % (SGD)	2010	2011	2012	2013	2014
FTSE ST All-Share	14.3	-17.3	26.4	2.2	8.4
STI	13.3	-14.5	23.4	3.0	9.6
FTSE ST Mid Cap	19.3	-24.3	38.6	-2.8	8.4
FTSE ST Small Cap	14.6	-31.5	36.1	7.9	-5.2
FTSE ST Fledging	15.9	-25.3	33.4	22.4	-3.9
FTSE ST China	10.2	-31.3	11.0	-2.5	1.5
FTSE ST Maritime	48.7	-50.1	2.0	10.6	-12.9
FTSE ST Catalist	-6.2	-28.0	15.0	16.4	-31.0

Sharpe Ratio and Drawdown - Total Return

Index (SGD)	Sharpe Ratio				Drawdown (%)			
	1YR	3YR	5YR	10YR	1YR	3YR	5YR	10YR
FTSE ST All-Share	1.3	0.9	0.5	-	-6.2	-13.5	-17.3	-
STI	1.3	0.8	0.5	0.5	-5.8	-12.9	-15.8	-55.6
FTSE ST Mid Cap	1.7	0.9	0.4	-	-6.9	-16.5	-24.3	-
FTSE ST Small Cap	-0.5	0.6	0.1	-	-15.0	-16.9	-31.5	-
FTSE ST Fledging	1.0	1.2	0.5	-	-10.9	-10.9	-25.4	-
FTSE ST China	1.0	0.1	-0.1	-	-7.2	-16.8	-32.5	-
FTSE ST Maritime	0.6	0.0	-0.3	-	-15.7	-24.0	-54.0	-
FTSE ST Catalist	-1.6	-0.4	-0.5	-	-32.8	-46.0	-42.7	-

Figures are annualised

1YR based on 12 months daily data. 3YR based on weekly data (Wednesday to Wednesday). 5YR and 10YR based on monthly data

Top 10 Constituents - Straits Times Index

Constituent	Country	ICB Sector	Net MCap (SGDm)	Wgt %
DBS Group Holdings	Singapore	Banks	36,615	12.31
Oversea-Chinese Banking	Singapore	Banks	32,538	10.94
Singapore Telecommunications	Singapore	Mobile Telecommunications	32,406	10.90
United Overseas Bank	Singapore	Banks	28,957	9.74
Jardine Matheson Holdings	Hong Kong	General Industrials	19,500	6.56
Hongkong Land Holdings	Hong Kong	Real Estate Investment & Services	12,567	4.23
Keppel	Singapore	Oil Equipment Services & Distribution	12,431	4.18
Jardine Strategic Holdings	Hong Kong	General Industrials	10,187	3.43
Capitaland	Singapore	Real Estate Investment & Services	9,361	3.15
Global Logistic Properties	Singapore	Real Estate Investment & Services	8,242	2.77
Totals			202,803	68.21

INFORMATION**Index Universe**

SGX Main Board and SGX Catalist

Base Date

STI - 9 January 2008

Other FTSE ST indices - 5 October 2007

Base Value

STI - 3344.53

Other FTSE ST indices - 1000

Investability Screen

Free-float adjusted and liquidity screened (except FTSE ST Fledgling Index and FTSE ST Catalist Index)

Index Calculation

Real time and end-of-day indices available. The STI is available on an intra-second streaming basis.

End-of-Day Distribution

By FTP and email

Currency

USD, EUR, GBP, JPY, SGD (real time in SGD only)

Review Dates

Semi-annually in March and September

History

Available from August 1999

Top 10 Constituents - FTSE ST All-Share Index

Constituent	Country	ICB Sector	Net MCap (SGDm)	Wgt %
DBS Group Holdings	Singapore	Banks	36,615	9.63
Oversea-Chinese Banking	Singapore	Banks	32,538	8.56
Singapore Telecommunications	Singapore	Mobile Telecommunications	32,406	8.52
United Overseas Bank	Singapore	Banks	28,957	7.62
Jardine Matheson Holdings	Hong Kong	General Industrials	19,500	5.13
Hongkong Land Holdings	Hong Kong	Real Estate Investment & Services	12,567	3.31
Keppel	Singapore	Oil Equipment Services & Distribution	12,431	3.27
Jardine Strategic Holdings	Hong Kong	General Industrials	10,187	2.68
Capitaland	Singapore	Real Estate Investment & Services	9,361	2.46
Global Logistic Properties	Singapore	Real Estate Investment & Services	8,242	2.17
Totals			202,803	53.35

ICB Supersector Breakdown

ICB Code	ICB Supersector	FTSE ST All-Share			STI		
		No. of Cons	Net MCap (SGDm)	Wgt %	No. of Cons	Net MCap (SGDm)	Wgt %
0500	Oil & Gas	16	22,137	5.82	3	18,930	6.37
1300	Chemicals	2	153	0.04	-	-	-
1700	Basic Resources	4	708	0.19	-	-	-
2300	Construction & Materials	11	3,057	0.80	-	-	-
2700	Industrial Goods & Services	32	59,609	15.68	6	44,629	15.01
3300	Automobiles & Parts	1	102	0.03	-	-	-
3500	Food & Beverage	15	20,693	5.44	4	17,541	5.90
3700	Personal & Household Goods	2	732	0.19	-	-	-
4500	Health Care	5	2,657	0.70	-	-	-
5300	Retail	9	5,359	1.41	1	4,024	1.35
5500	Media	3	8,088	2.13	1	6,671	2.24
5700	Travel & Leisure	11	23,345	6.14	3	18,536	6.23
6500	Telecommunications	3	35,918	9.45	2	34,867	11.73
7500	Utilities	3	2,063	0.54	-	-	-
8300	Banks	3	98,110	25.81	3	98,110	33.00
8600	Real Estate	49	87,839	23.11	6	47,012	15.81
8700	Financial Services	4	7,982	2.10	1	7,014	2.36
9500	Technology	6	1,613	0.42	-	-	-
Totals		179	380,164	100.00	30	297,334	100.00

Index Characteristics

Attributes	FTSE ST All-Share	STI	FTSE ST Fledging
Number of constituents	179	30	327
Net MCap (SGDm)	380,164	297,334	11,361
Dividend Yield %	3.26	3.05	3.05
Constituent Sizes (Net MCap SGDm)			
Average	2,124	9,911	35
Largest	36,615	36,615	188
Smallest	17	934	1
Median	402	6,269	23
Weight of Largest Constituent (%)	9.63	12.31	1.65
Top 10 Holdings (% Index MCap)	53.35	68.21	14.12

Index Characteristics

Attributes	FTSE ST China	FTSE ST Maritime	FTSE ST Catalyst
Number of constituents	28	8	149
Net MCap (SGDm)	42,775	5,194	4,410
Dividend Yield %	2.68	2.50	0.86
Constituent Sizes (Net MCap SGDm)			
Average	1,528	649	30
Largest	12,567	3,036	355
Smallest	17	42	1
Median	311	167	15
Weight of Largest Constituent (%)	29.38	58.44	8.05
Top 10 Holdings (% Index MCap)	91.94	100	38.59



The FTSE ST Index Series and the Straits Times Index ("Index Series") are calculated by FTSE International Limited ("FTSE") in conjunction with SPH Data Services Pte Ltd ("SPH") and data from Singapore Exchange Securities Trading Ltd ("SGX-ST") (collectively the "Licensor Parties"). All rights in the Index Series vest in the Licensor Parties with all rights in the Straits Times Index ("STI") vesting exclusively in Singapore Press Holdings Limited, the holding company of SPH. "FTSE®" is a trade mark of the London Stock Exchange Group companies and is used by FTSE International Limited ("FTSE") under licence. The Industry Classification Benchmark ("ICB") is owned by FTSE. FTSE does not accept any liability to any person for any loss or damage arising out of any error or omission in the ICB. "Singapore Exchange", "SGX" and "SGX-ST" are trade marks of Singapore Exchange Ltd and "Straits Times", Straits Times Index, "ST" and "STI" are trade marks of Singapore Press Holdings Limited. All information is provided for information purposes only. Every effort is made to ensure that all information given in this factsheet is accurate, but no responsibility or liability can be accepted by FTSE, any Partner or their licensors for any errors or for any loss from use of this publication. Neither FTSE, Partner nor any of their licensors makes any claim, prediction, warranty or representation whatsoever, expressly or impliedly, either as to the results to be obtained from the use of the index/indices set out above or the fitness or suitability of the index/indices for any particular purpose to which it might be put. Nothing in this factsheet constitutes financial or investment advice. FTSE is not an investment adviser and makes no representation regarding the advisability of investing in any security/investment vehicle. A decision to invest in any such security/investment vehicle should not be made in reliance on any information above. Indices cannot be invested in directly. Inclusion of a security in an index is not a recommendation to buy, sell or hold such security. Please see ftse.com for additional legal disclosures and complete index methodology details. All figures and graphical representations in this publication refer to past performance and are sourced by FTSE. Past performance is no guarantee of future results. Charts and graphs are provided for illustrative purposes only. Index returns shown do not represent the results of the actual trading of investable assets. Certain returns shown may reflect back-tested performance. All performance presented prior to the index inception date is back-tested performance. Back-tested performance is not actual performance, but is hypothetical. The back-test calculations are based on the same methodology that was in effect when the index was officially launched. However, back-tested data may reflect the application of the index methodology with the benefit of hindsight, and the historic calculations of an index may change from month to month based on revisions to the underlying economic data used in the calculation of the index. No part of this information may be reproduced, stored in a retrieval system or transmitted in any form or by any means, electronic, mechanical, photocopying, recording or otherwise, without prior written permission of FTSE. Distribution of FTSE data and the use of FTSE indices to create financial products requires a licence with FTSE and/or its licensors.

Data definitions available from info@ftse.com

For further information visit www.ftse.com, email info@ftse.com or call your local FTSE office:

Beijing	+86 10 5833 2202
Boston	+1 888 747 FTSE (3873)
Dubai	+971 4 375 1868
Hong Kong	+852 2164 3333
London	+44 (0) 20 7866 1810
Milan	+39 02 3604 6953
Mumbai	+91 22 6649 4180
New York	+1 888 747 FTSE (3873)
Paris	+33 (0)1 53 76 82 89
Rio de Janeiro	+55 (21) 3736 3726
San Francisco	+1 888 747 FTSE (3873)
Shanghai	+86 21 6058 9131
Sydney	+61 (0)2 9293 2864
Tokyo	+81 (3) 3581 2811
Toronto	+1 416 572 7979